



# MV2009

DOUBLE COLUMN SEATING  
FOR COMPANIONS OF PEOPLE  
WITH DISABILITIES.



WEATHER-RESISTANT

ANTIBACTERIAL

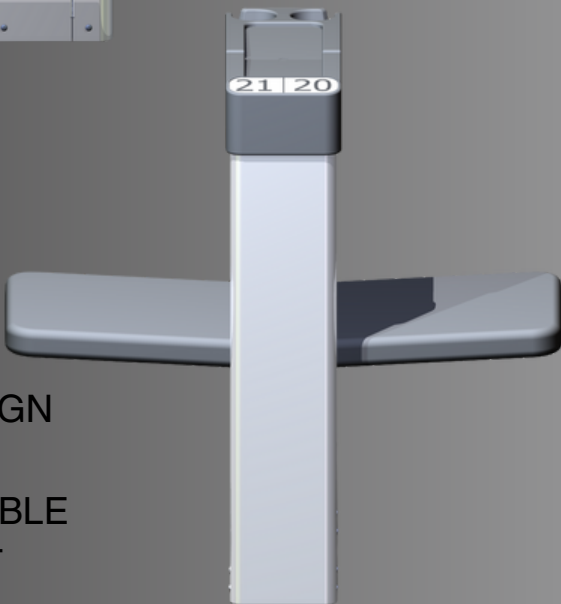
NON-TOXIC

WATER-REPELLENT

ECO-FRIENDLY

RECYCLABLE

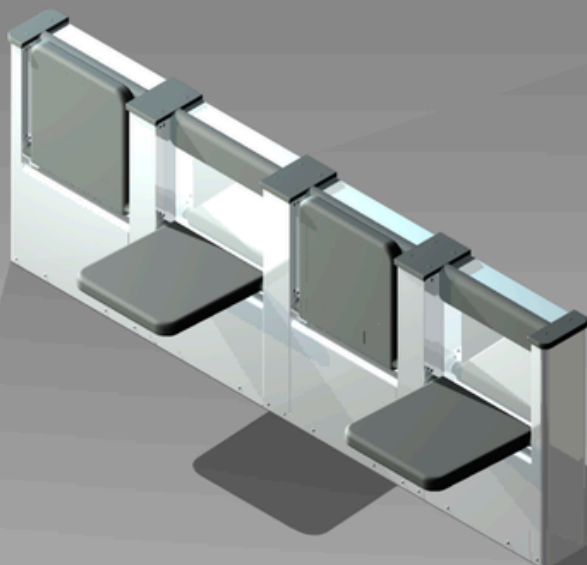
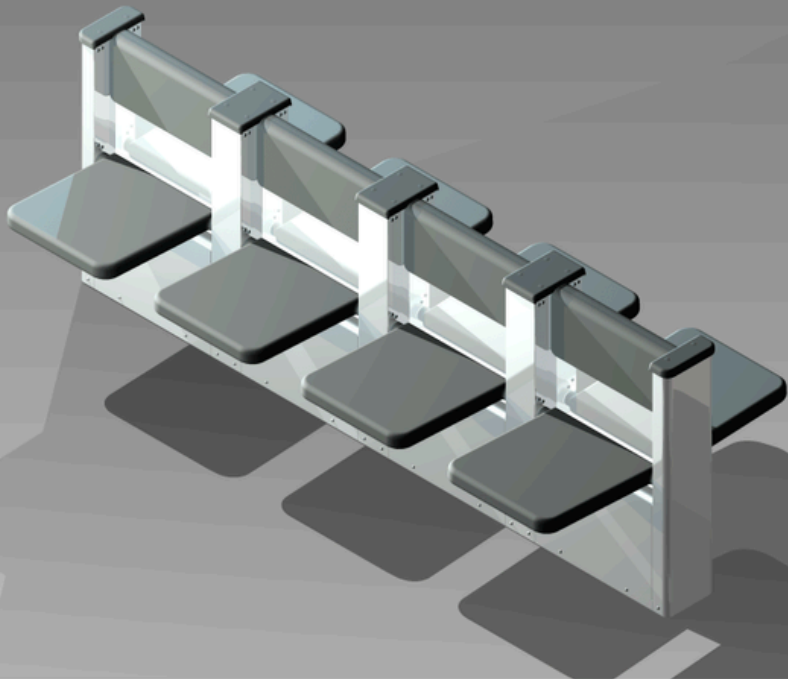
AUTOMATIC  
PANIC-PROOF  
CLOSURE

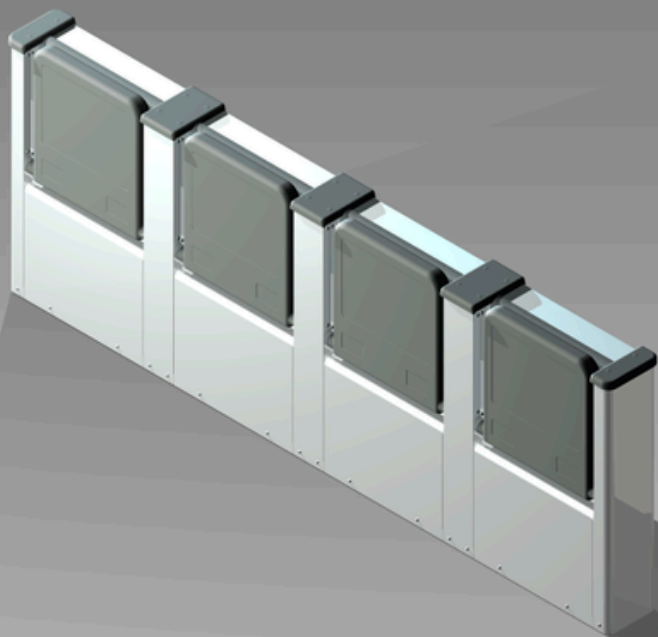


PATENTED DESIGN

COLORS AVAILABLE  
UPON REQUEST







# technical description

# *mv2009*

The MV 2009 double flip-up column seat is designed for installation in public venues for performances, such as sports facilities, theaters, and other locations that, by current regulations, must allocate seating for people with disabilities and their companions.

## **Intended Use**

The device provides an ergonomic and functional solution for the companion of a person with disabilities, ensuring ease of use and space optimization.

## **Structural Frame**

The column consists of an internal vertical frame made of press-folded sheet metal with a thickness of 30/10 mm, welded to a "U"-shaped base made of press-folded sheet metal with a thickness of 40/10 mm. The base is fitted with four mounting points to the floor to ensure stability and safety.

## **Seats**

The seats are made of welded steel tubular profiles and feature an automatic reclining mechanism based on gas springs. They are mounted on two omega-shaped supports with spherical caps, made from a high-resistance, self-lubricating technopolymer that is highly abrasion-resistant and maintenance-free.

## **Protective Treatments**

All metallic components inside the column undergo corrosion protection treatments through cathodolysis followed by painting, or alternatively, hot-dip galvanizing, ensuring long-lasting durability even in challenging environmental conditions.

## **Cushioning**

The seat cushioning is made from an innovative EVA (ethylene-vinyl acetate) copolymer material, offering lightness, high comfort, abrasion resistance, and resistance to chemical and atmospheric agents. The material is closed-cell, making it waterproof and UV-resistant, as well as fire-retardant to Class C1 standards.

## **External Coating**

The external cladding is made of stainless steel, a material highly resistant to oxidation. Upon request, it can also be made from aluminum, galvanized sheet metal, or powder-coated sheet metal.

## **Additional Features**

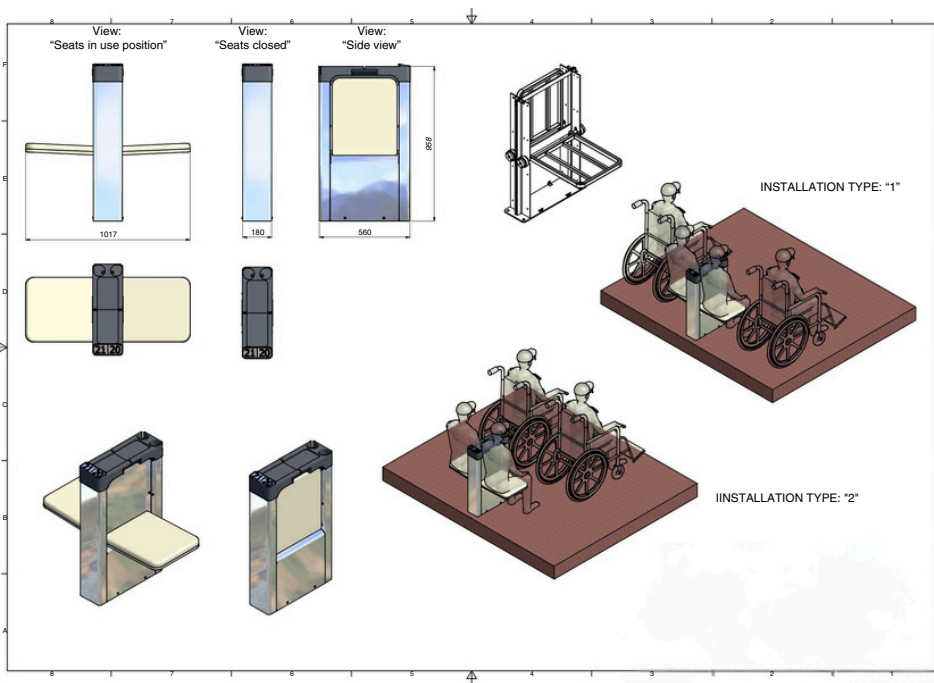
The top closure of the column is designed to include a storage compartment, two cup holders, and a recess for inserting seat numbers, an identification label, or an advertising plaque.

## **Certifications**

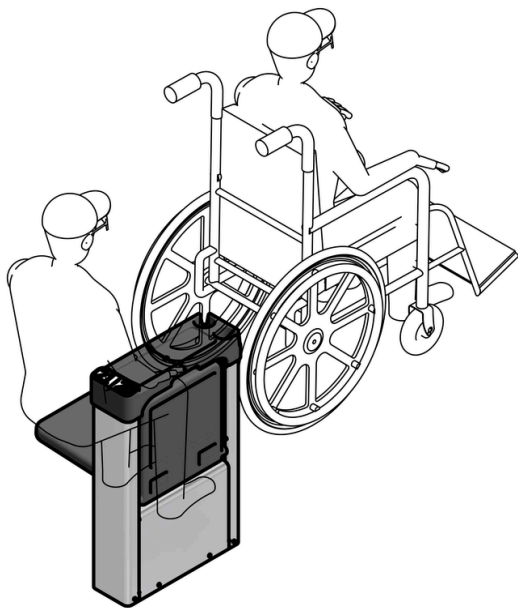
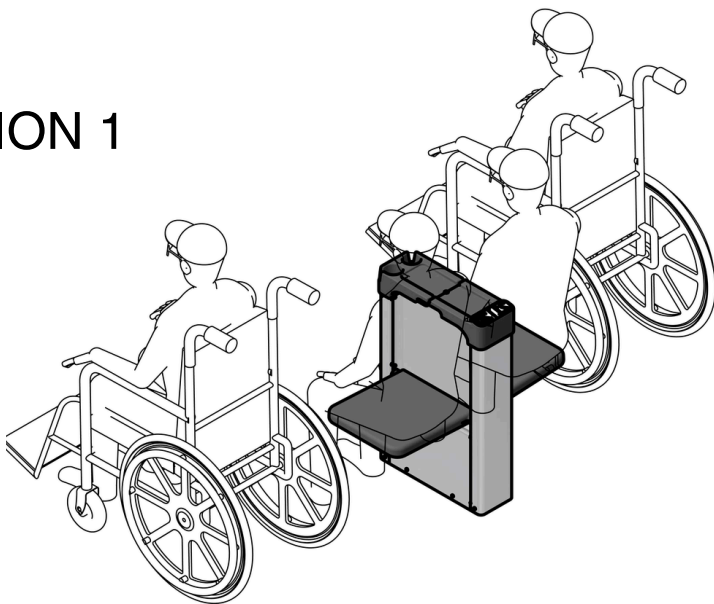
The MV 2009 double column seat has undergone testing by the relevant certification bodies and complies with current regulations. All necessary certifications can be provided upon request.

# dimensions

## ***mv2009***

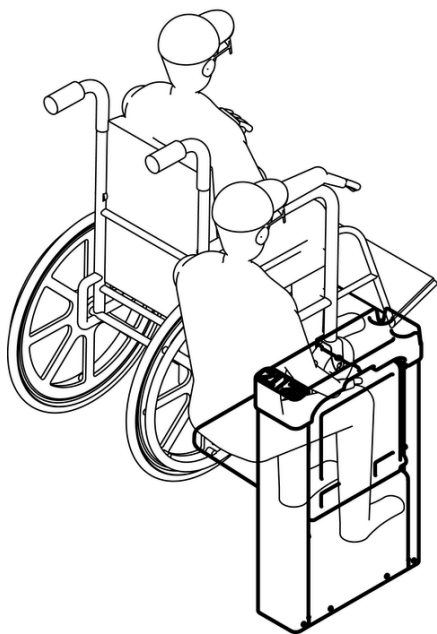


# OPTION 1

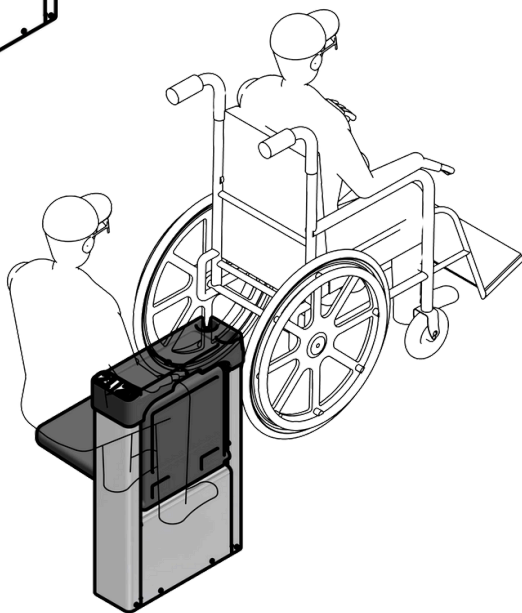


# OPTION 2





OPTION 3



OPTION 4

