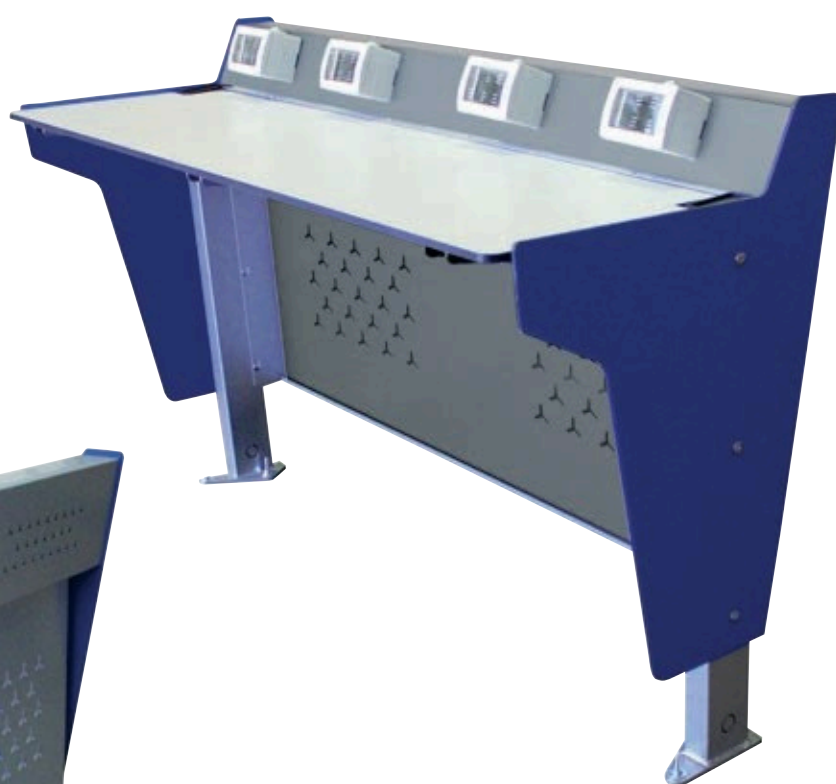




TECHNICAL SHEET



MP 2025



MP 2025

TECHNICAL DESCRIPTION

MP2025

Dimensions: width 1800 mm, depth 660 mm, height 720 + 100 mm

Press desk with latest-generation fixed top compliant with the FIFA 2030 / UEFA CAF directives; it is the ideal space for web and video journalists.

It has a clean and elegant design, with a structure entirely made in metal.

The sides are made of Fe 360 steel tubing, with a section of 80x40x2 mm, while the central connecting beam is made of metal tubing with a section of 80x30x2 mm. Four 3 mm thick sheet metal shelves are fixed to it, which support the fixed HPL top with a thickness of 10 mm.

The coupling is done using M4 stainless steel screws.

At the front, the modesty panel is made of 2 mm thick metal sheet, shaped with stiffening ribs and enriched with decorative slots.

At the top, a special 2 mm thick shaped sheet acts as a multifunctional tile: it supports the electrical and/or data transmission sockets (to be housed in shielded containers with a minimum protection level of IP55, not included and to be installed by qualified personnel able to provide certification) and protects the passage of the electrification cables. This sheet is also decorated with slots.

There are special holes along the legs and inside the hidden parts, to allow installers to pass the cables wherever necessary. These holes are initially closed by sheets that can be easily removed with a screwdriver.

The table is fixed directly to the step tread in 4 points by means of dowels or concrete screws appropriately sized depending on the nature of the support.

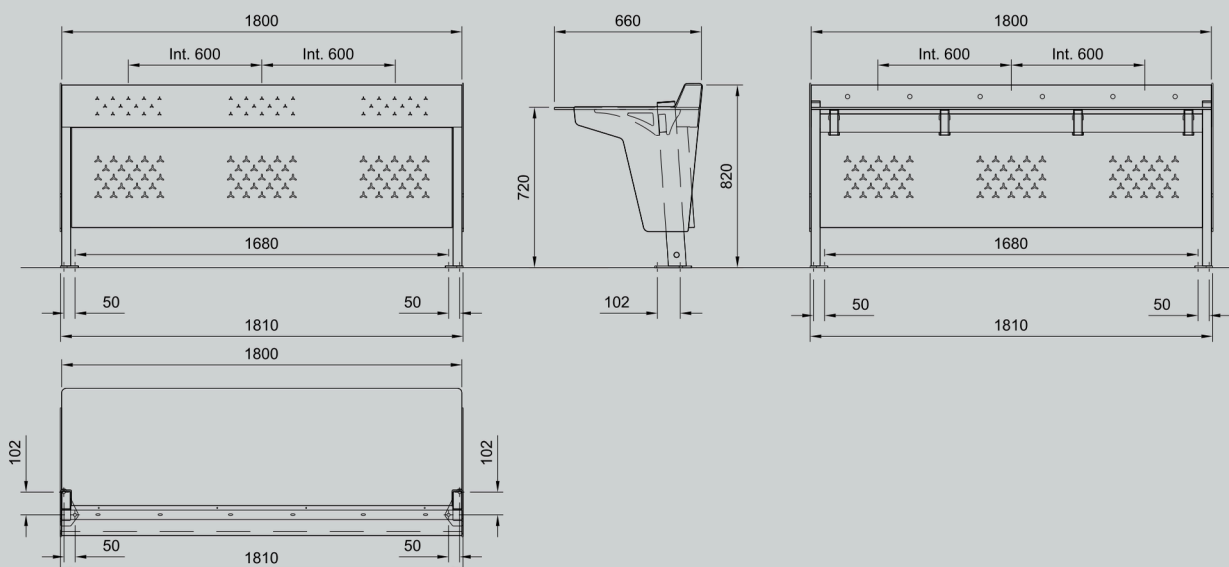
The lateral closing sides, designed to lighten the shape, are present on both sides in the “Single” configuration.

In the configuration in rows, an initial and an end side are provided.

The sides are made of 6 mm thick HPL and can be customized in color, choosing from those available in the color palette approved by the Works Management.

All metal parts are treated with cataphoresis and powder coating, with a RAL 9006 gray finish and colors upon request.

The characteristics of the finishes, both of the metal and of the HPL, make the product suitable for use in outdoor environments although protected by a roof / cover, as per FIFA / UEFA recommendations.



TECHNICAL DESCRIPTION

Folding armchairs on swivel base with return spring

Models: **M2016** - **M2013** - **M2012** complying with the latest FIFA and UEFA regulations and FIBA homologated; complying with European standards UNI EN 13200-1-4; tested with laboratory tests by the largest Italian research and testing institute in the wood-furniture sector according to the European standard UNI EN 12727: 2002 (level 4 - severe).

M2016 overall dimensions: width 455 mm, depth with closed seat 100 mm, seat height from 410 to 450 mm, total dimensions with seat open 450 mm, center to center distance with shared armrest min. 480 mm, center to center distance with double armrests min. 520 mm.

M2013 overall dimensions: width 480 mm, depth with closed seat 150 mm, depth with closed seat and armrest 285 mm, depth with open seat 500 mm.

M2012 overall dimensions: width 480 mm, depth with closed seat 300 mm, depth with open seat 490 mm, total seat height 830 mm.

The supporting structure in polyamide is fixed to the single 80x40 mm steel beam, thickness 2 mm. The beam is fixed to the vertical leg equipped with a spring swivel mechanism granting the 360° rotation of the seat and its automatic return to its original position. The unit, by means of a steel 150x150 mm plate, 8 mm thick, is fixed on the tread of the step by means of n. 4 fixing points.

